

JUNE 2023

# CASSA CENTRALE BANCA

Company Profile

# TABLE OF CONTENTS

A great Cooperative Group	3
We are a group	7
Risk cautions and efficiency	13
Territorial presence	15
Key data	23
Cooperative. Sustainable. Responsible.	25
Organisational structure	34
<i>Group</i>	35
<i>Parent company</i>	37
Offer	38
Instrumental companies	41

# A GREAT COOPERATIVE GROUP

Solid. Close. Ours.

# A GREAT COOPERATIVE GROUP

We are the Cooperative Banking Group that stands alongside the territories and communities.

Our aim is to promote the well-being of our partners and the territories in which we operate, helping contribute towards the common good and create well-being that can be handed down to the generations to come, as part of a sustainable path.

We intend to achieve this aim by combining the value and autonomy of a system of local Banks, the very expression of the different territories, with the profitability, efficiency, growth and stability typical of a major banking group.



# A GROUP THAT IS...



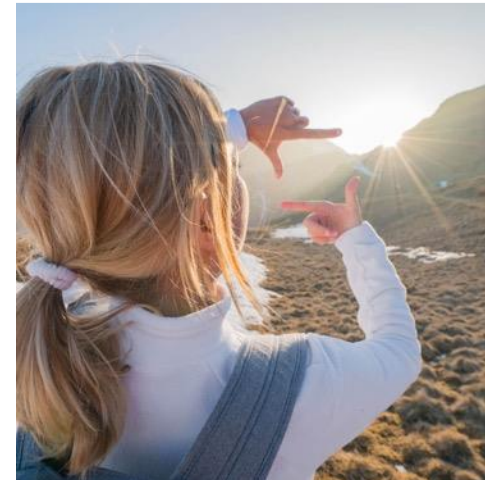
## SOLID

Amongst the top 10 banking groups  
in Italy in terms of assets and financial solidity



## CLOSE

A network that promotes social and  
economic well-being on a local level



## OURS

A system of Cooperative Banks  
united by a Cohesion Agreement

# OUR STRENGTHS



## GROWTH AND INNOVATION

- Strengthening investment capacity in **innovation** and **technology**, to improve the offer and service to customers.
- Expanding the knowledge of **customers**, benefitting from common and integrated data.
- Optimising the efficiency of the **information processes**, pooling skills and experience.



## LOCAL RELATIONSHIPS

- Developing a range that can satisfy all **our partners' and customers' needs**.
- Maintaining and promoting relations with the **local community**.
- Investing to improve the **social, economic and cultural context** of the territory.



## AUTONOMY AND VIRTUOSITY

- Guaranteeing an **active participation** of virtuous Banks in the definition of the **Group strategies** and **operative objectives**.
- Ensuring a good level of **operational autonomy**, **modulated** according to the virtuosity of the individual banks.



## EQUITY SOLIDITY

- An **excellent equity solidity** with extensive intra-group free capital.
- Achieving, as a Group, a **CET1 Ratio** that is amongst the best in the banking system.



## EFFICIENCY AND AGILITY

- Having a balanced **governance** and the right degree of decision-making agility.
- Simplifying processes through growing **digitisation**.
- Developing **synergies** of costs and revenues through the optimisation of centres of excellence and best practices.



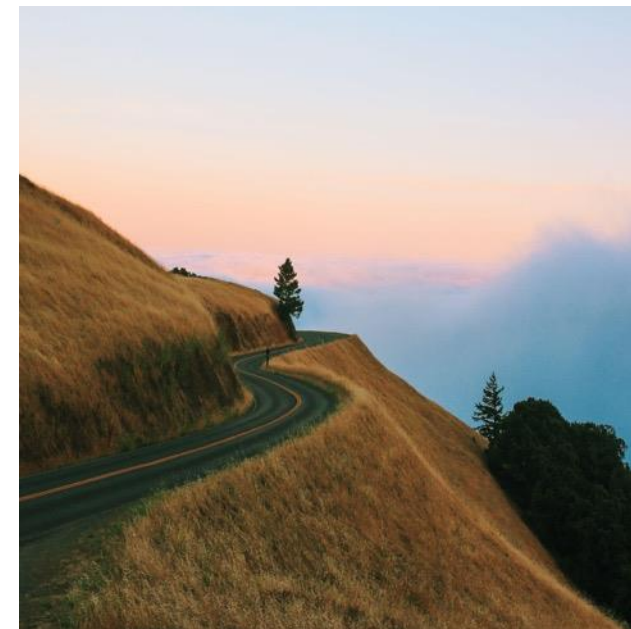
# WE ARE A GROUP

But it was not always so

# WE ARE A GROUP, BUT IT WAS NOT ALWAYS SO

Driven by the Cooperative Credit reform, we decided to create a Group to continue to do what we have always done: to contribute towards the well-being of our territories, preserving their social cohesion, participatory development and progress of the communities.

The new Group has taken on the name of Cassa Centrale, the parent company around which the Banks have joined forces, along with the instrumental companies that today make up the banking group.





# OUR HISTORY

February 28, 1974

Cassa Centrale delle  
Casse Rurali Trentine S.p.A. is  
born

1974

1999

Agreements between  
Federazione Trentina,  
Veneta and Friuli Venezia Giulia.  
Partnerships with banks outside  
the region of Trento

September 12, 2002

Name change to Cassa Centrale delle  
Casse Rurali Trentine e delle Banche di  
Credito Cooperativo del Nord Est S.p.A.  
welcoming the expansion of the  
corporate base to include the  
cooperative credit banks of Veneto  
and Friuli Venezia Giulia

2002

2007

June 13, 2007

The extraordinary shareholders' meeting  
approves the new name "Cassa  
Centrale Banca - Credito Cooperativo  
del Nord Est S.p.A.", incorporating the  
now supra-regional nature of the bank

June 26, 2007

Signed the agreement for the entry of DZ Bank  
into the capital of Cassa Centrale Banca. A  
partnership between similar souls, since DZ BANK  
associates numerous Raiffeisen and Volksbanken  
in a cooperative movement similar to the Italian  
one, which has 160 years of life in Germany.

2007

2016

April 8, 2016

The cooperative credit reform  
becomes law. Parliament  
converts the Decree Law of  
14 February 2016

# OUR HISTORY

October 13, 2016

Verona:  
the project announcement

September 27, 2017

Milan: more than 100 Banks  
choose Cassa Centrale Banca

August 2, 2018

Official Bank of Italy and ECB  
authorisation

January 1, 2019

**The Group is born**



2016

2017

2017

2017

2018

2018

2019

March 31, 2017

Milan: Cassa Centrale Banca  
announces that it will be  
exceeding the equity threshold  
required by the cooperative  
credit reform law

Late November, 2017

Achievement of the share  
capital threshold required by law

August 10, 2018

Acquired Claris Leasing S.p.A., a  
company operating in the  
leasing sector



# OUR HISTORY

December 10, 2019

After development of the market segment for consumer credit through the Prestipay brand, the dedicated company Prestipay S.p.A. was set up

**Presti**pay

January 1, 2020

As part of the reorganisation of the corporate structure of the Group companies operating in ICT and back-office services, Allitude S.p.A. was set up

**allitude**  
empower your bank attitude

2019

2019

2019

2020

2020

February 19, 2019

The ECB communicated its decision to classify the Cassa Centrale Group as a «significant» supervised entity.

December 18, 2019

Establishment of the company Claris Rent S.p.A. with a sole shareholder, a subsidiary of Claris Leasing S.p.A., in order to implement the project to develop long-term leasing.

**CLARIS**  
RENT

March, 2020

In the difficult context of the Covid-19 emergency, in order to mitigate the effects of the lockdown, the Cassa Centrale Group promptly took on board the Government's important legislative provisions and implemented all the actions to facilitate the granting of the benefits envisaged by these provisions in order to support households and businesses.

# OUR HISTORY

December 31, 2020

The Cassa Centrale Group closed 2020 with profits up 8.8% to €245 million and a CET1 ratio of 21.46%. This puts the Group at the top of Italy's banking sector in terms of capitalisation and confirm its ability to provide even better support to the Communities, reacting more than positively to the Covid-19 emergency.

August 2, 2021

Cassa Centrale Banca acquired an additional 10% stake in Centrale Trading, which thus joins the Cassa Centrale Group as a subsidiary, from Cassa Centrale Raiffeisen Alto Adige.



2020

2021

2021

2021

July 9, 2021

The Cassa Centrale Group passed the Comprehensive Assessment, according to the results published by the European Central Bank (ECB) today. Below are the overall results for the year: CET1 ratio of **17.14%** in the «baseline» scenario compared to an initial ratio of **19.72%** as of December 2019, significantly above the 8% threshold set by the ECB; CET1 ratio of **10.59%**, in the «adverse» scenario, compared to the minimum 5.5% threshold set by the ECB.

December 31, 2021

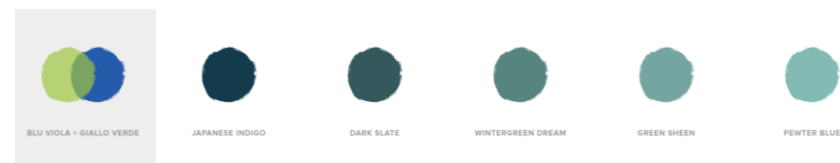
The results confirm the efficiency and solidity of the Cassa Centrale Group. Net profit in 2021 amounted to 333 million Euros (+36% y-o-y) with a CET1 ratio of 22.6%. The Group confirms its earning capacity demonstrated already during its first three years, in an environment still conditioned by the impacts of the pandemic.

# ANALYSIS AND EVOLUTION OF THE PICTOGRAM



Positività  
Proattività  
Affidabilità  
Vitalità  
Credibilità

Lealtà  
Autorità  
Professionalità  
Armonia



	HEX	RGB	CMYK	PANTONE C	PANTONE U
	#005366	0 83 102	95 40 30 35	7708 C	308 U
	#FFBA3A	255 186 58	0 25 80 0	136 C	121 U
	#FFFFFF	255 255 255	0 0 0 0	-	-

# STORYTELLING AND COLORS OF THE NEW PICTOGRAM



Thanks to the rebranding process, the two traditional symbols of the BCCs (the double-crossed cc) and the Casse Rurali Trentine (the fascio clesiano) were replaced by a single symbol: **the three squares pictogram**. This symbol becomes the visual representation of the brand's meanings.

**The square**, a founding element of the entire identity, **is used as a common thread to portray vigor, closeness and belonging**. It is a symbol that represents the common identity that the banks Società del Gruppo and Capogruppo have forged. **The three intertwined squares represent three elements which, joined together, add up to something greater: the Group.**

The brand therefore becomes a depiction of the Group's strategic-value positioning, which stands out as different and distinct in the scope of the credit sector.

# SOLID, RISK CAUTIOUS AND EFFICIENT

Reliability is an important commitment that we choose to guarantee to our customers and it is one of our main strengths



# RISK CAUTIOUS

Our commitment to keep the Group stable, safe and efficient comes from our high degree of equity solidity, the low risk profile and the highly-efficient organisational model.

## High equity solidity

**Group's CET 1 Ratio: 22.8%**

The higher these values, the more solid the Group

## Low risk profile

Non-performing exposure

**Net NPL ratio of 0.9%**

A low value indicates a good quality loan portfolio

## Strong resilience

**Consolidated Net income:**

**€ 562m**

Very resilient business model despite the current adverse macroeconomic environment

Financial data for the FY 2022

# TERRITORIAL PRESENCE

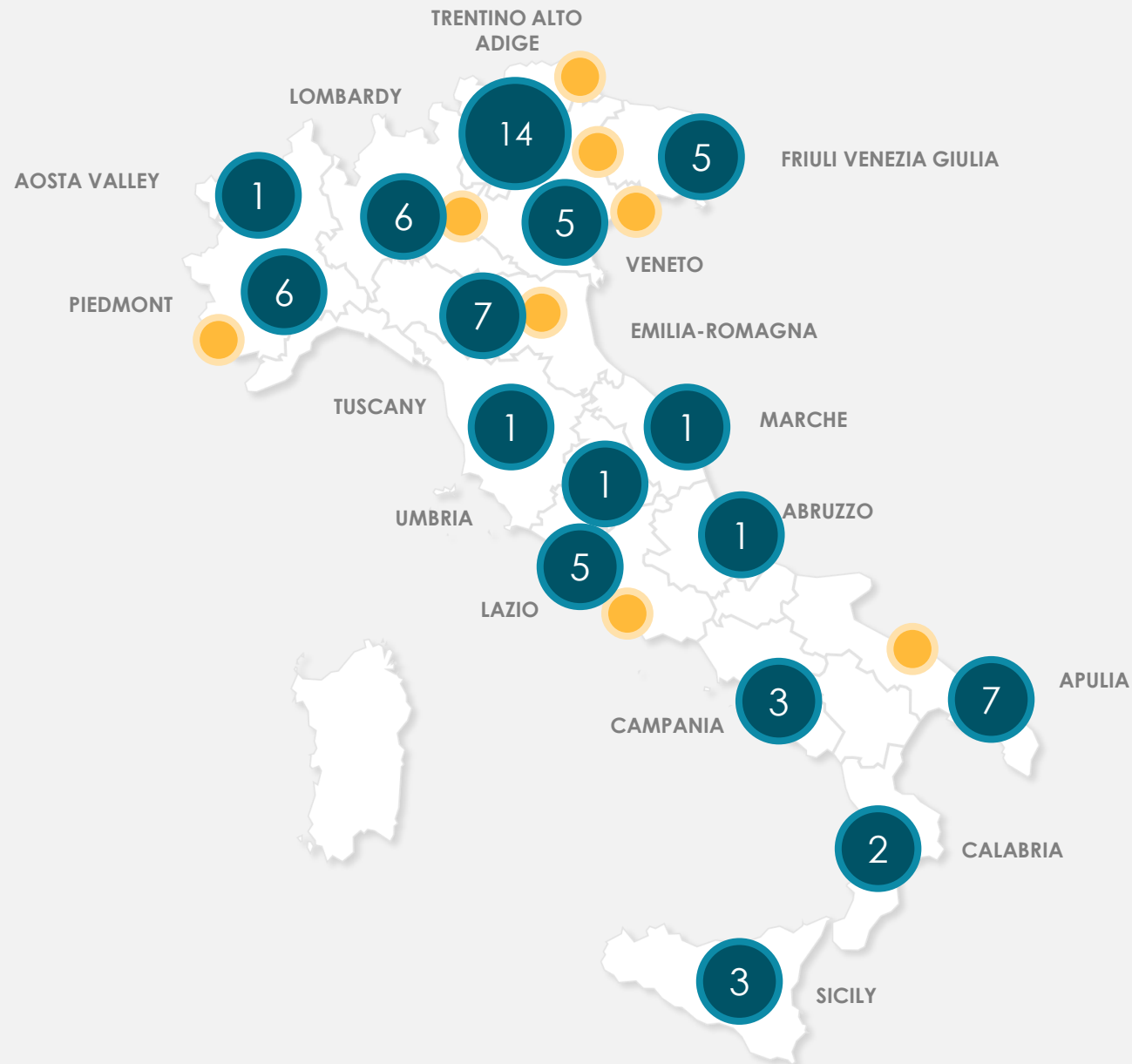
# LOCALLY PRESENT

We are a major Group with a capillary presence throughout Italy, thanks to **68 local Banks** that are well-rooted in the different territories.

AFFILIATED BANKS

PARENT COMPANY OFFICES

Data as of 01.01.2023



# PARENT COMPANY OFFICES

## TRENTO OFFICE

---

VIA GIOVANNI SEGANTINI, 5 - 38122 TRENTO

VIA GIOVANNI SEGANTINI, 10 - 38122 TRENTO

VIA GIOVANNI SEGANTINI, 23 - 38122 TRENTO

VIA JACOPO ACONCIO, 9 - 38122 TRENTO

VIA INNSBRUCK, 2 - 38123 TRENTO

VIA ALTO ADIGE, 160 - 38121 TRENTO

PIAZZA CENTA, 13 - 38122 TRENTO

## UDINE TERRITORIAL OFFICE

---

VIA VERZEGNIS, 15  
33100 UDINE

## PADUA TERRITORIAL OFFICE

---

VIA GIACINTO LONGHIN, 21  
35129 PADUA

## BRESCIA TERRITORIAL OFFICE

---

VIA SOSTEGNO, 60  
25124 BRESCIA

## CUNEO TERRITORIAL OFFICE

---

VIA GENOVA, 11/A  
12100 CUNEO

## BOLOGNA TERRITORIAL OFFICE

---

VIA DEI TRATTATI COMUNITARI EUROPEI 1957-2007, 15  
40127 BOLOGNA

## ROME TERRITORIAL OFFICE

---

VIALE ALEXANDRE GUSTAVE EIFFEL, 15  
00148 ROME

## BARI TERRITORIAL OFFICE

---

VIA GIOVANNI AMENDOLA, 168/5  
70126 BARI

# THE AFFILIATED BANKS 1/5

## Abruzzo

- BCC ABRUZZI E MOLISE

## Calabria

- BANCA CENTRO CALABRIA CREDITO COOPERATIVO
- BCC DELL'ALTO TIRRENO DELLA CALABRIA VERBICARO

## Campania

- BCC AQUARA
- BCC FLUMERI
- BANCA MONTE PRUNO CREDITO COOPERATIVO DI FISCIANO, ROSCIGNO E LAURINO

## Emilia-Romagna

- BANCA MALATESTIANA
- BCC ROMAGNA OCCIDENTALE
- BCC FELSINEA BANCA DI CREDITO COOPERATIVO DAL 1902
- BANCA CENTRO EMILIA CREDITO COOPERATIVO
- BANCA DI CREDITO COOPERATIVO DI SARSINA SOCIETÀ COOPERATIVA
- ROMAGNABANCA CREDITO COOPERATIVO
- BANCA DI BOLOGNA

# THE AFFILIATED BANKS 2/5

## Friuli Venezia Giulia

- CASSA RURALE FVG BANCA DI CREDITO COOPERATIVO
- BANCATER CREDITO COOPERATIVO FVG SOCIETÀ COOPERATIVA
- PRIMACASSA – CREDITO COOPERATIVO FVG SOCIETÀ COOPERATIVA
- FRIULOVEST BANCA CREDITO COOPERATIVO
- ZKB ZADRUŽNA KRAŠKA BANKA TRST GORICA ZADRUGA ZKB (CREDITO COOPERATIVO DI TRIESTE E GORIZIA SOCIETÀ COOPERATIVA)

## Lazio

- BCC DEL CIRCEO E PRIVERNATE
- BCC DEI CASTELLI ROMANI E DEL TUSCOLO
- BANCANAGNI CREDITO COOPERATIVO
- BANCA CENTRO LAZIO CREDITO COOPERATIVO
- BANCA LAZIO NORD

## Lombardy

- CASSAPADANA BANCA DI CREDITO COOPERATIVO
- BCC BARLASSINA
- CASSA RURALE ED ARTIGIANA DI BORGO SAN GIACOMO BANCA DI CREDITO COOPERATIVO
- BCC DI BRESCIA
- BANCA DEL TERRITORIO LOMBARDO CREDITO COOPERATIVO
- BCC LODI

## Marche

- BANCO MARCHIGIANO

# THE AFFILIATED BANKS 3/5

## Piedmont

- BENE BANCA CREDITO COOPERATIVO DI BENE VAGIENNA
- CASSA RURALE ED ARTIGIANA DI BOVES BANCA DI CREDITO COOPERATIVO
- BANCA DI CARAGLIO CREDITO COOPERATIVO
- BANCA DI CHERASCO CREDITO COOPERATIVO
- BCC PIANFEI E ROCCA DÈ BALDI
- BANCA TERRITORI DEL MONVISO

## Apulia

- BCC DELL'ALTA MURGIA
- BCC ALBEROBELLO, SAMMICHELE E MONOPOLI
- BCC CASSANO DELLE MURGE E TOLVE
- BCC DI CONVERSANO
- BCC LOCOROTONDO

- BCC SAN GIOVANNI ROTONDO
- BCC SAN MARZANO DI SAN GIUSEPPE

## Sicily

- BCC DEI CASTELLI E DEGLI IBLEI MAZZARINO
- SICILBANCA
- BCC LA RISCOSSA DI REGALBUTO

## Tuscany

- CASTAGNETO BANCA 1910



# THE AFFILIATED BANKS 4/5

## Trentino Alto Adige

- CASSA RURALE VALLAGARINA BANCA DI CREDITO COOPERATIVO
- CASSA RURALE ALTOGARDA - ROVERETO BANCA DI CREDITO COOPERATIVO
- CASSA RURALE DI LEDRO BANCA DI CREDITO COOPERATIVO
- CASSA RURALE VALSUGANA E TESINO BANCA DI CREDITO COOPERATIVO
- CASSA RURALE DOLOMITI BANCA DI CREDITO COOPERATIVO
- CASSA RURALE VAL DI SOLE BANCA DI CREDITO COOPERATIVO
- CASSA RURALE ALTA VALSUGANA BANCA DI CREDITO COOPERATIVO
- CASSA RURALE VAL DI Fiemme
- RAiffeisen di Renon
- CASSA RURALE NOVELLA E ALTA ANAUNIA BANCA DI CREDITO COOPERATIVO
- RAiffeisen di San Martino in Passiria
- CASSA RURALE VAL DI NON – ROTALIANA E GIOVO
- CASSA DI TRENTO, LAVIS, MEZZOCORONA, VALLE DI CEMBRA E ALTA VALLAGARINA BANCA DI CREDITO COOPERATIVO
- LA CASSA RURALE – CREDITO COOPERATIVO ADAMELLO GIUDICARIE VALSABBIA PAGANELLA

# THE AFFILIATED BANKS 5/5

## Umbria

- BANCA DI CREDITO COOPERATIVO DI SPELLO E DEL VELINO

## Aosta Valley

- BCC VALDOSTANA

## Veneto

- CORTINABANCA
- BANCA DEL VENETO CENTRALE CREDITO COOPERATIVO
- BVR BANCA – BANCHE VENETE RIUNITE
- BANCA PREALPI SANBIAGIO CREDITO COOPERATIVO
- BANCADRIA COLLI EUGANEI CREDITO COOPERATIVO

# KEY DATA

# KEY DATA

Financial data for the FY 2022

## FINANCIAL SOLIDITY



**22.8%**  
CET1 Ratio



**82%**  
Coverage Ratio

## ECONOMIC SUSTAINABILITY



**€ 755m**  
Net commissions



**€ 562m**  
Net income

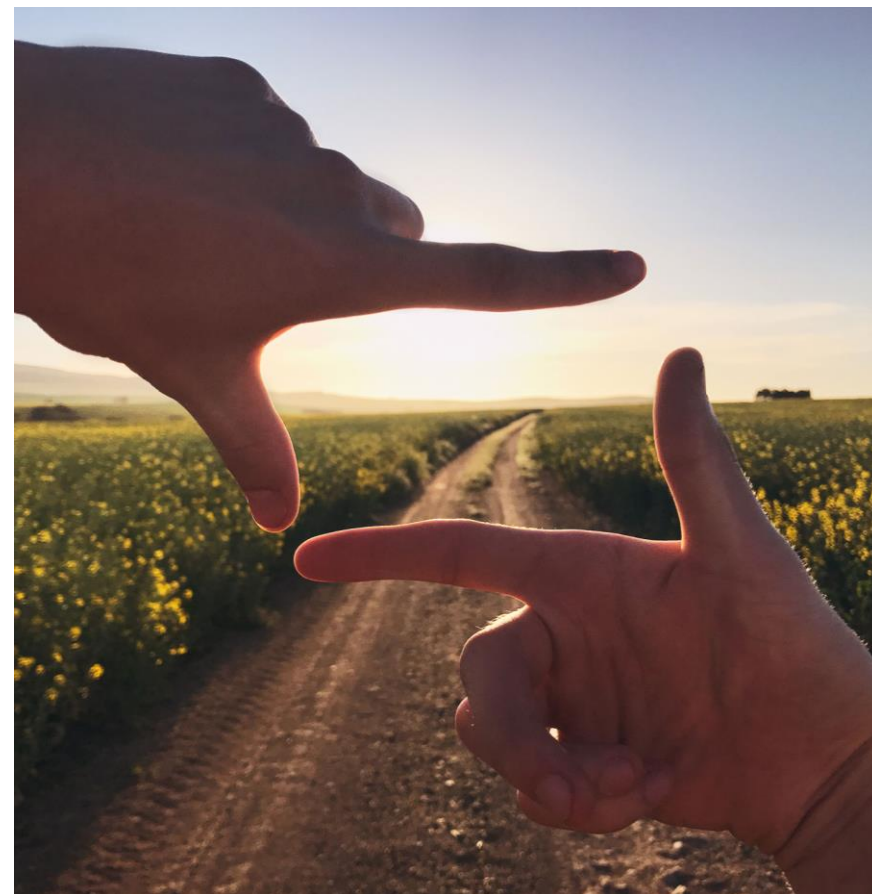
## LOCAL RELATIONSHIPS



**€ 47.9bn**  
Net loans



**€ 67.2bn**  
Direct funding



*Cooperative. Sustainable. Responsible.*

# *Cooperative. Sustainable. Responsible.*



**Cooperative**  
by nature



**Sustainable**  
from inception



**Responsible**  
by vocation

# COOPERATIVE BY NATURE

Heirs to a history that has been a factor in the development of communities for over 100 years, we believe that it is possible to operate in a spirit of collaboration and solidarity, combining efficiency and cooperation, reciprocity and profitability, coordination and autonomy.

Our status as a Cooperative Banking Group specifically reflects the principles of mutual credit co-operation and reinforces their implementation in our daily operations.





# SUSTAINABLE FROM INCEPTION

We are a network of Banks formed by people who work for their Community.

Like those same people, our aim is to create wealth that we can pass on to the next generation.

A goal that can only be achieved as part of a sustainable path.



# RESPONSIBLE BY VOCATION

We have always lived in the Communities and Local Areas in which we operate, alongside the people who live there.

We pursue the growth and well-being of our Communities through a sustainable way of operating and common values to be passed on to future generations.



# SUSTAINABILITY IN NUMBERS

## WITH PEOPLE

Inclusion and enhancement are the defining features of the work environment we build every day. We believe in the importance of everyone's growth, professional and personal, as a citizen belonging to a Community.



over  
**11.700**  
Employees



**42.32%**  
women



**57.68%**  
men



**45 anni**  
Average age

Figures as at 31 December 2022

## Training



**Over 600.00 hours**  
of total training  
for an average of  
**52 hours**  
per employee

During 2022, introduced a training plan on Diversity and Inclusion.

## Wellbeing

- Pension fund and supplementary health insurance
- Better work-life balance with more flexibility



All Group companies have adopted the Policies on Respect for Diversity and Equal Opportunity, as well as Respect for Human Rights.

# SUSTAINABILITY IN NUMBERS

## WITH PARTNERS AND CUSTOMERS

We offer support, advocacy, and guidance with solutions that respond concretely and clearly to evolving needs. We are close, we speak transparently, we share the path to the future.



almost  
**2,5 milioni**  
Customers



over  
**464 mila**  
Partners



**92%**  
Individual Partners



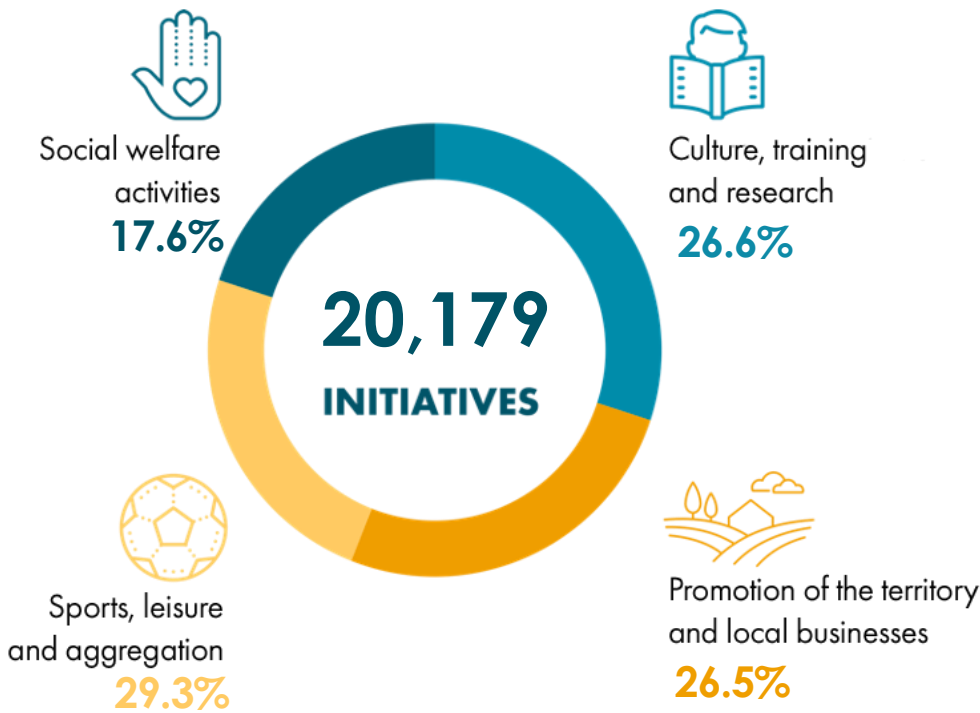
**+ 8.894**  
Partners in 2022

Figures as at 31 December 2022

# SUSTAINABILITY IN NUMBERS

## WITH COMMUNITIES

At least 70% of profits of the Cooperative Credit Banks are allocated to an indivisible reserve. This way the assets finance the development of the territories and the real economy. 3% of profits are allocated to Mutual Funds for the promotion and development of Cooperation.



Figures as at 31 December 2022



# SUSTAINABILITY IN NUMBERS

## WITH THE ENVIRONMENT

Protecting and respecting natural resources is a priority in the strategy we follow to develop our business while reducing its impact on the environment.



**87%**  
of electricity from  
renewable sources



**0.98**  
Carbon intensity index: tCO<sub>2</sub>e  
emissions per employee  
market-based method  
(-3% from 2021)



**77%**  
of paper consumed  
FSC certified



**4,5 tCO<sub>2</sub>e**  
emissions avoided  
thanks to the purchase  
of recycled paper

Figures as at 31 December 2022

# FOR A SUSTAINABLE DEVELOPMENT

Some of the business objectives and purposes set out in the Articles of Association of the Affiliated Banks and the Parent are directly associated with the 2030 Agenda's Sustainable Development Goals.

The Group acknowledges the importance of operating in accordance with the principles of lawfulness, morality, professionalism, integrity, and transparency, consistently with our business goals.

This is why Cassa Centrale Banca and the Group's Banks have adopted the first sustainability policies.

- Anti-corruption policy
- Environmental policy
- Human rights policy
- Diversity policy
- Arms brokering policy

Since 2023, the Group has been a member of the United Nations Global Compact.

The principles of the Global Compact and the Sustainable Development Goals are explicitly referenced in the Group's Code of Ethics, along with the Charter of Values of Cooperative Banks.





# STEP BY STEP, ON A PATH THAT LEADS TO VALUE.

The growth strategy that guides us into tomorrow is the result of the daily relationship we weave with the Territories in which we are present and permeates our Sustainability Plan to continue creating shared value.



# THE STRUCTURE

Between autonomy and central coordination

# THE MODEL

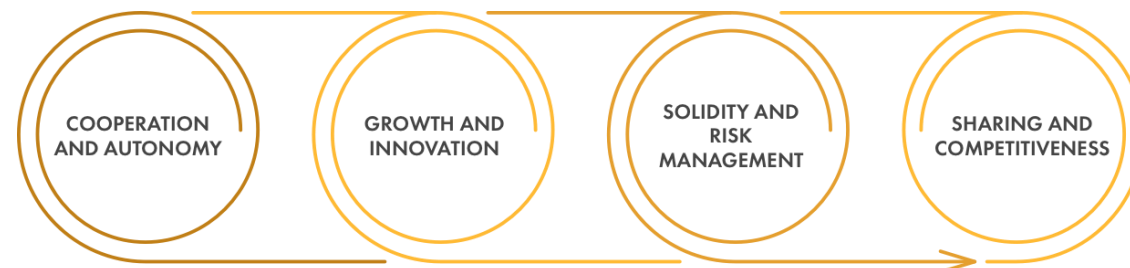
As a system of local, autonomous, cooperative banks organised into a modern Banking Group, we have adopted a structure that can optimise the contribution made by all, within a central coordination system.

It is a unique, original model that self-feeds and creates shared well-being.

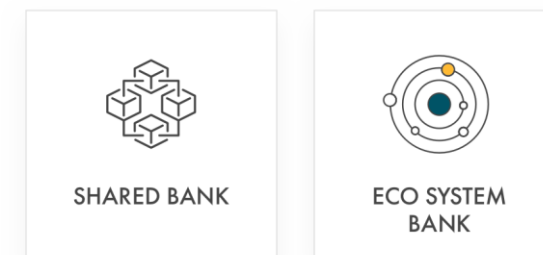
## Structure between autonomy and central coordination

COMPETITIVENESS, EFFICIENCY AND CONSTANT DEVELOPMENT OF AN OFFER SUITABLE FOR THE MARKET	INVOLVEMENT AND ACTIVE PARTICIPATION
DECISIONS AND STRATEGIC INITIATIVES WITH THE MOST EXTENSIVE REPRESENTATION OF ALL PARTIES	UNITARY AND EFFICIENT ADMINISTRATION, MANAGEMENT AND CONTROL SYSTEMS
CONSTANT, BALANCED MONITORING OF STRATEGIC CHOICES AND MANAGERIAL BALANCE	REPRESENTATION OF THE VARIOUS GEOGRAPHIC AREAS

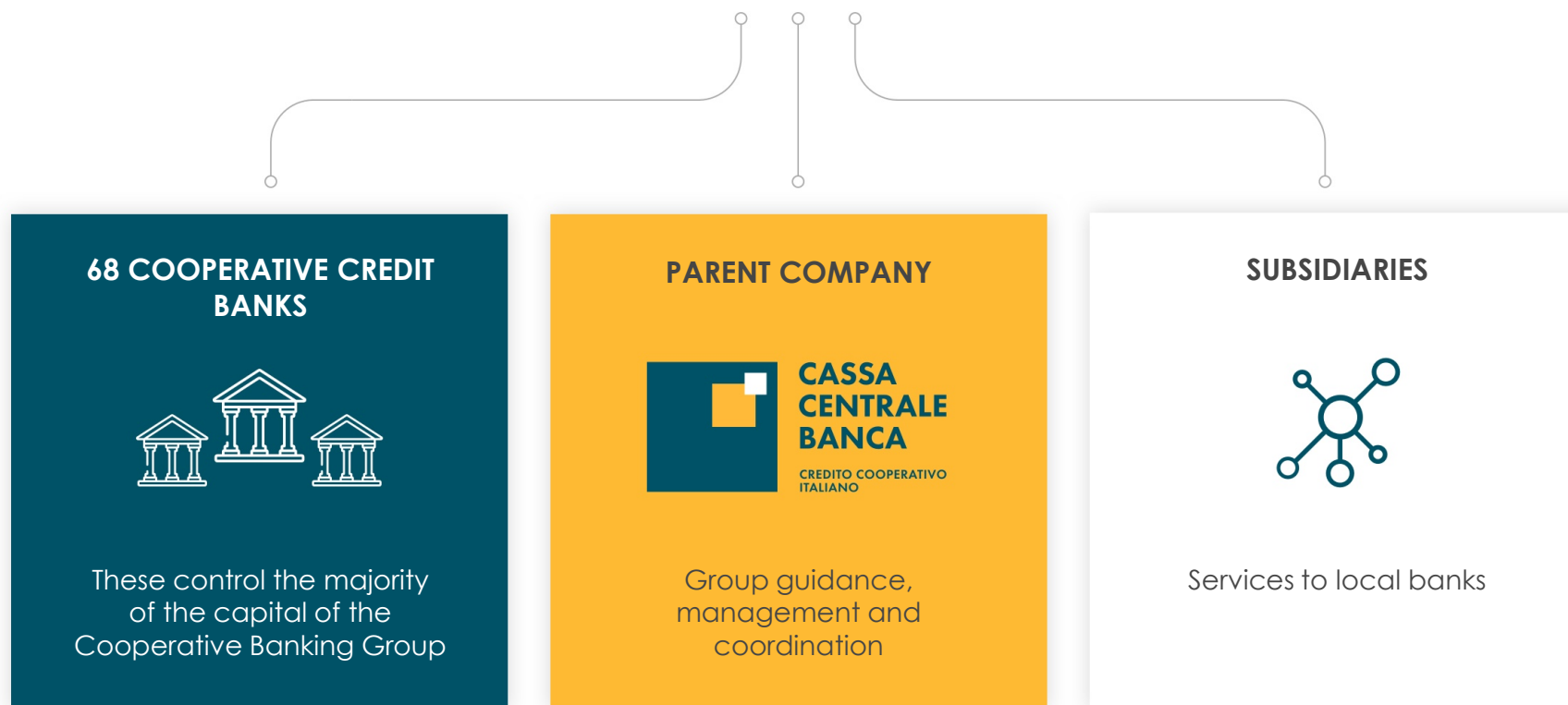
## Competitive advantages



## Features



# GROUP ORGANISATION



Data as of 01.01.2023

# THE PARENT COMPANY

For more than 40 years, Cassa Centrale Banca has enjoyed the status of reference partner for the cooperative banking system, sharing values, culture, strategies and reference model.

It has always operated as a level-two bank, offering support and drive to the work of cooperative credit banks (BCCs) and rural banks (Casse Rurali), its partners and customers, with an offer that has always stood out for the reliability and innovation of its products and services, coupled with highly-specialised advisory capabilities.

In 2019, it became the parent company of the first Italian Cooperative Banking Group, thus assuming the responsibilities for guiding, controlling and coordinating the Group.



# THE OFFER: AN ANSWER TO EVERY NEED

Our offer is focussed both on the banking sector, through the services of **Cassa Centrale Banca** and of the **instrumental companies**, and on the private sector, through our **local Banks**



# THE OFFER FOR THE BANKING SECTOR

## Affiliated Banks and other local Banks

Through Cassa Centrale Banca, or by using the services offered by the instrumental companies, the Group boasts an offer that has always stood out for the reliability and innovation of its products and services, coupled with highly-specialised advisory capabilities.

- **Credits**
- **Finance**
- **Payments**
- **Planning**



# THE OFFER FOR THE PRIVATE SECTOR

## Private, families and business customers

Through its local banks, the Group can successfully meet all the different needs of privates and businesses.

- **Current accounts**
- **Credit and debit cards**
- **Credit**
- **Leasing & Factoring**
- **Investments, insurance and welfare**
- **Collection and payment instruments**
- **Internet and mobile banking**
- **Risk management**
- **Investment banking**
- **International**
- **Other**





# THE GROUP INSTRUMENTAL COMPANIES

# SUBSIDIARIES



Centrale Soluzioni Immobiliari manages the Group's instrumental real estate activities, aiming to defend the value of the properties used as collateral against the NPLs held by the Cassa Centrale Banca Group, in particular through the intervention in enforcement procedures (or "auctions").



The company, which was established on 1st January 2020 from the merger of 8 operating companies involved in IT and administrative services, is specialised in IT and back-office outsourcing activities for the banking industry.



Claris Leasing offers lease transactions on instrumental assets, real estate and boats.



Claris Rent (a wholly-owned subsidiary of Claris Leasing) is a company that provides long-term rental services for the mobility and operating lease of capital goods.



Assicura Agenzia and Assicura Broker provide insurance products and brokering services to the distributing banks.



Centrale Trading provides technical assistance to cooperative credit banks distributing Directa SIM on-line trading services.

# SUBSIDIARIES

The logo for Prestipay, featuring the word "Presti" in dark blue and "pay" in white inside an orange circle, all within a light gray rounded rectangle.

Prestipay meets the financial needs of families and customers of the Cooperative Credit Banks, Rural Banks and Raiffeisen belonging to the Cassa Centrale Group.

The logo for NEAM, consisting of an orange square icon with a white diagonal line and the letters "NEAM" in a bold, dark blue sans-serif font.

NEAM S.A (Nord Est Asset Management S.A) is the company that manages NEF, a multi-manager, multi-segment Luxembourgian mutual investment fund.

The logo for Centrale Casa, featuring a stylized house icon in blue and orange, followed by the text "CENTRALE CASA" in blue and orange, and "AGENZIA DI INTERMEDIAZIONE IMMOBILIARE" in smaller blue text below.

In liquidation.

# ASSOCIATES

## Servizi e Finanza FVG

Servizi e Finanza FVG develops suitable solutions for the marketing and creation of highly technological, innovative services for the management of payment systems and tools, also on behalf of third parties including but not limited to brokers.

---

## Casse Rurali Raiffeisen Finanziaria SPA

In liquidation.

---

Registered office and General Management

Via Segantini, 5 - 38122 Trento

Tel. 0461.313 111

[cassacentrale.it](http://cassacentrale.it)